

**Panasonic**

NMOS MEMORY

**Panasonic**

# DIGITAL INTEGRATED CIRCUITS DATA

MN4164-15  
MN4164P-15  
MN4164-20  
MN4164P-20  
MN4164-25  
MN4164P-25

## MN4164 NMOS 65,536 x 1 BIT DYNAMIC RAM

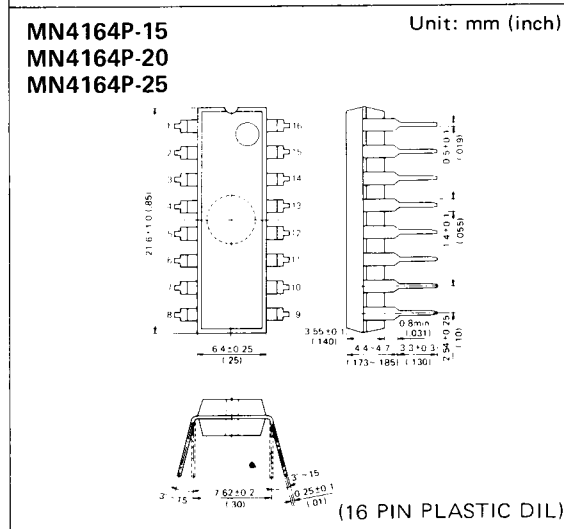
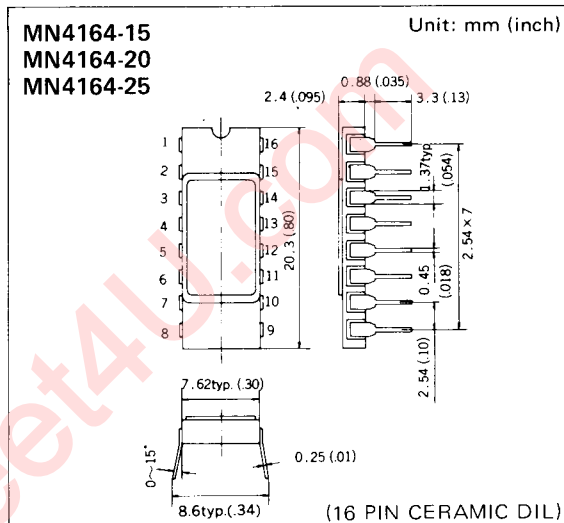
### Description

System oriented features include operation from a single +5V  $\pm 10\%$  tolerance power supply, direct TTL interfacing capability, on-chip addresses and data registers which eliminate the need for interface registers, and two chip select methods to allow the user to determine the appropriate speed/power characteristics of his memory system.

The RAM module also incorporates several flexible operating modes: "Read", "Write", "Read-Modify-Write" cycles, "Page-Mode" operation and "RAS-Only" refresh. Proper control of the clock inputs ( $\overline{\text{RAS}}$ ,  $\overline{\text{CAS}}$  and  $\overline{\text{WRITE}}$ ) allows common I/O capability, two dimensional chip selection, and extended page boundaries (for operating in page mode).

### Features

- 65,536 x 1 RAM, 16-pin package
- Row access time:
  - 150 ns Max. (MN4164-15/MN4164P-15)
  - 200 ns Max. (MN4164-20/MN4164P-20)
  - 250 ns Max. (MN4164-25/MN4164P-25)
- Cycle time:
  - 270 ns Max. (MN4164-15/MN4164P-15)
  - 330 ns Max. (MN4164-20/MN4164P-20)
  - 410 ns Max. (MN4164-25/MN4164P-25)
- Low power dissipation:
  - 275 mW Max. (active)
  - 27.5 mW Max. (standby)
- Single 5V supply,  $\pm 10\%$  tolerance
- 128 refresh cycles/2ms



67

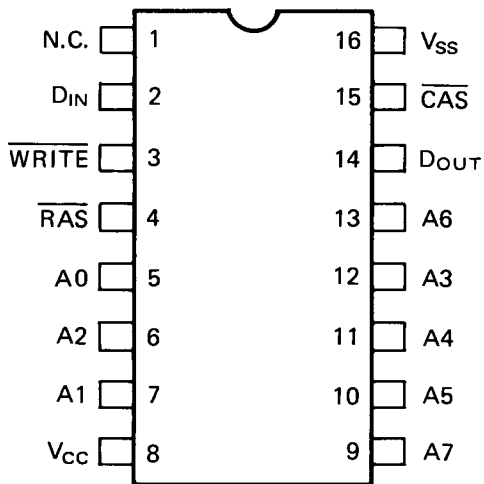
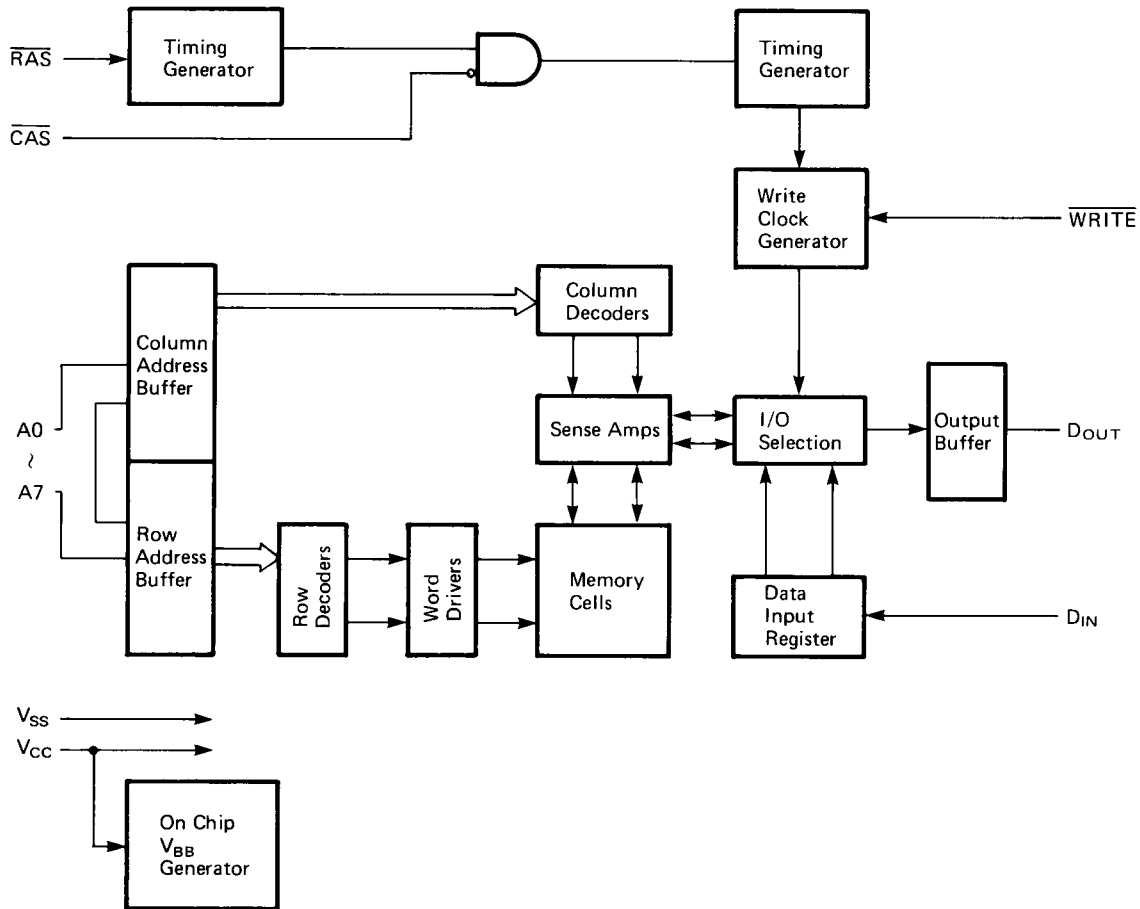
ORIG

003693

PAN  
SKI

**Moulthrop Sales Incorporated**  
7080 Commerce Drive  
PLEASANTON, CA 94566  
(415) 846-0550

The device specifications are subject to change without prior notice. While every precaution has been taken in the preparation of this data sheet, the publisher assumes no responsibility for patent liability with respect to the use of the information contained herein.



Pin Names	Function
$A_0 \sim A_7$	Address Inputs
$\overline{RAS}$	Row Address Strobe
$\overline{CAS}$	Column Address Strobe
$\overline{WRITE}$	Write Enable
$D_{IN}$	Data Input
$D_{OUT}$	Data Output
$V_{CC}$	Power (+5V)
$V_{SS}$	Ground (0V)

Absolute Maximum Ratings

Rating	Symbol	Value	Unit
Voltage on any Pin relative to $V_{SS}$	$V_{IN}, V_{OUT}$	-1.0 to + 7.0	V
Voltage on $V_{CC}$ Supply relative to $V_{SS}$	$V_{CC}$	-1.0 to + 7.0	V
Operating Temperature	$T_{OP}$	0 to + 70	°C
Storage Temperature	$T_{stg}$	-55 to +150	°C
Power Dissipation	$P_D$	1	W
Short Circuit Current	$I_{OS}$	50	mA

Note:

Exceeding Absolute Maximum Ratings may cause permanent device damage. Functional operating of the device is not implied outside the operating conditions. Exposure to absolute maximum ratings for extended periods of time may impact device reliability.

Recommended Operating Conditions (referenced to  $V_{SS}$ )

Parameter	Symbol	Min	Typ	Max	Unit	Temperature
Supply Voltage	$V_{CC}$	4.5	5.0	5.5	V	0°C to +70°C
	$V_{SS}$	0	0	0	V	
Input High Voltage, all inputs	$V_{IH}$	2.2	—	$V_{CC}+1.0V$	V	
Input Low Voltage, all inputs	$V_{IL}$	-1.0	—	0.8	V	

Capacitance (Ta = 25°C, f = 1 MHz)

Parameter	Symbol	Min	Typ	Max	Unit
Input Capacitance	$C_{IN}$	—	—	10	pF
Output Capacitance	$C_{OUT}$	—	—	12	pF

DC Characteristics (Recommended operating conditions unless otherwise noted.)

Parameter	Symbol	Min	Typ	Max	Unit	Notes
Operating Current Average power supply current (RAS, CAS cycling; $t_{RC} = \text{min}$ )	$I_{CC1}$	—	—	50	mA	1)
Standby Current Power supply current (RAS = CAS = $V_{IH}$ )	$I_{CC2}$	—	—	5	mA	
Referesh Current Average supply current (RAS cycling, CAS = $V_{IH}$ ; $t_{RC} = \text{min}$ )	$I_{CC3}$	—	—	40	mA	1)
Page Mode Current Average power supply current (RAS = $V_{IL}$ , CAS cycling; $t_{PC} = \text{min}$ )	$I_{CC4}$	—	—	40	mA	1)
Input Leakage Current Input leakage current, any input ( $0V \leq V_{IN} \leq 5.5V$ , all other pins not under test = $0V$ )	$I_{LI}$	-10	0.1	10	$\mu A$	
Output Leakage Current (Data out is disabled, $0V \leq V_{OUT} \leq 5.5V$ )	$I_{LO}$	-10	0.1	10	$\mu A$	
Output Level Output low voltage ( $I_{OL} = 4.2 \text{ mA}$ )	$V_{OL}$	—	—	0.4	V	
Output Level Output high voltage ( $I_{OH} = -5 \text{ mA}$ )	$V_{OH}$	2.4	—	—	V	

Note:

1)  $I_{CC1}$ ,  $I_{CC3}$ ,  $I_{CC4}$  depend on cycle rate and output loading. Specifications are for maximum cycle rate and no load. Supply current may be scaled according to the following equation:

$$I(t_{RC}) = \frac{t_{RC \text{ min}} \times I(t_{RC \text{ min}}) + (t_{RC} - t_{RC \text{ min}}) \times I_{CC2}}{t_{RC}}$$

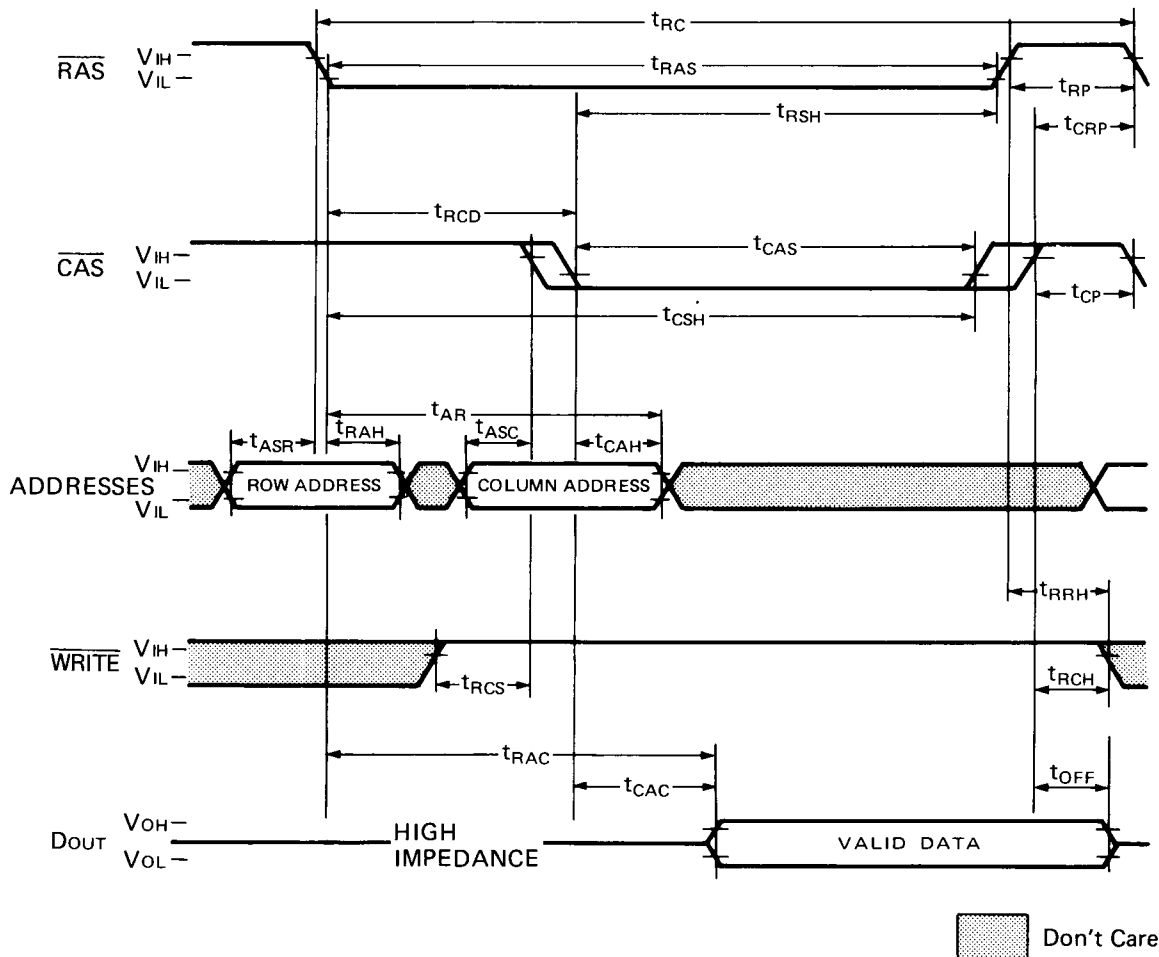
AC Characteristics<sup>1, 2)</sup> (Recommended operating conditions unless otherwise noted.)

Parameter	Symbol	Unit	MN4164-15 MN4164P-15		MN4164-20 MN4164P-20		MN4164-25 MN4164P-25		Note
			Min	Max	Min	Max	Min	Max	
Refresh period	$t_{REF}$	ms	—	2	—	2	—	2	
Random read or write cycle time	$t_{RC}$	ns	270	—	330	—	410	—	
Read-write cycle time	$t_{RWC}$	ns	310	—	375	—	515	—	
Page mode cycle time	$t_{PC}$	ns	170	—	225	—	275	—	
Access time from $\overline{RAS}$	$t_{RAC}$	ns	—	150	—	200	—	250	4), 6), 8)
Access time from CAS	$t_{CAC}$	ns	—	100	—	135	—	165	5), 6), 8)
Output buffer turn-off delay	$t_{OFF}$	ns	0	40	0	50	0	60	7)
Transition time	$t_T$	ns	3	50	3	50	3	50	3)
$\overline{RAS}$ precharge time	$t_{RP}$	ns	100	—	120	—	150	—	
$\overline{RAS}$ pulse width	$t_{RAS}$	ns	150	10,000	200	10,000	250	10,000	
$\overline{RAS}$ hold time	$t_{RSH}$	ns	100	—	135	—	165	—	
$\overline{CAS}$ precharge time	$t_{CP}$	ns	50	—	80	—	100	—	
$\overline{CAS}$ pulse width	$t_{CAS}$	ns	100	10,000	135	10,000	165	10,000	
$\overline{CAS}$ hold time	$t_{CSH}$	ns	150	—	200	—	250	—	
$\overline{RAS}$ to $\overline{CAS}$ delay time	$t_{RCD}$	ns	25	50	25	65	40	85	8)
$\overline{CAS}$ to $\overline{RAS}$ precharge time	$t_{CRP}$	ns	-20	—	-20	—	-20	—	
Row Address set-up time	$t_{ASR}$	ns	0	—	0	—	0	—	
Row Address hold time	$t_{RAH}$	ns	20	—	20	—	35	—	
Column Address set-up time	$t_{ASC}$	ns	-5	—	-5	—	-5	—	
Column Address hold time	$t_{CAH}$	ns	45	—	55	—	75	—	
Column Address hold time referenced to $\overline{RAS}$	$t_{AR}$	ns	95	—	120	—	160	—	
Read command set-up time	$t_{RCS}$	ns	0	—	0	—	0	—	
Read command hold time	$t_{RCH}$	ns	0	—	0	—	0	—	
Write command set-up time	$t_{WCS}$	ns	-20	—	-20	—	-20	—	10)
Write command hold time	$t_{WCH}$	ns	45	—	55	—	75	—	
Write command hold time referenced to $\overline{RAS}$	$t_{WCR}$	ns	95	—	120	—	160	—	
Write command pulse width	$t_{WP}$	ns	45	—	55	—	75	—	
Write command to $\overline{RAS}$ lead time	$t_{RWL}$	ns	60	—	80	—	100	—	
Write command to $\overline{CAS}$ lead time	$t_{CWL}$	ns	60	—	80	—	100	—	
Data-in set-up time	$t_{DS}$	ns	0	—	0	—	0	—	9)
Data-in hold time	$t_{DH}$	ns	45	—	55	—	75	—	9)
Data-in hold time referenced to $\overline{RAS}$	$t_{DHR}$	ns	95	—	120	—	160	—	
$\overline{CAS}$ to $\overline{WRITE}$ delay	$t_{CWD}$	ns	80	—	95	—	125	—	10)
$\overline{RAS}$ to $\overline{WRITE}$ delay	$t_{RWD}$	ns	130	—	160	—	200	—	10)
Read command hold time referenced to $\overline{RAS}$	$t_{RRH}$	ns	20	—	25	—	35	—	

Notes:

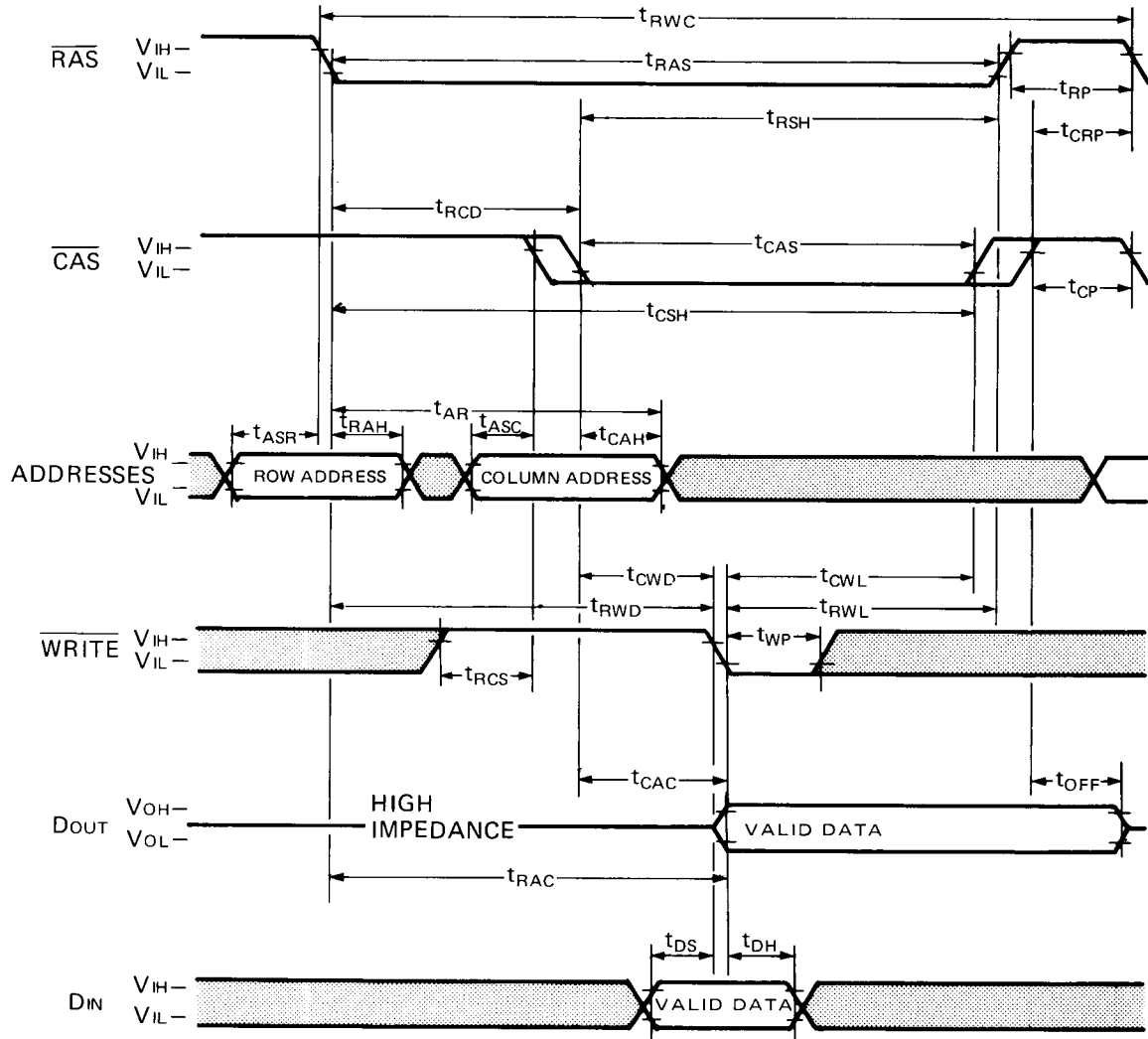
- 1) Several cycles are required after power up or prolonged periods of  $\overline{\text{RAS}}$  inactivity (2 ms) before proper device operation is achieved. Any 8 cycles which perform refresh are adequate for this purpose.
- 2) AC measurements assume  $t_T = 5.0 \text{ ns}$ .
- 3)  $V_{IH}$  and  $V_{IL}$  are reference levels for measuring signal timings and transition times.
- 4) Assumes that  $t_{RCD} \leq t_{RCD} (\text{Max})$ .
- 5) Assumes that  $t_{RCD} \geq t_{RCD} (\text{Max})$ .
- 6) Measure with load equivalent to 2 TTL loads and 100pF.
- 7)  $t_{OFF}$  defines the time at which the output enters high impedance state. It is not referenced to levels of  $V_{IH}$  and  $V_{IL}$ .
- 8) Operation within the  $t_{RCD} (\text{Max})$  limit ensures that  $t_{RAC} (\text{Max})$  can be met.  $t_{RCD}$  is specified as a reference point only; if  $t_{RCD}$  is greater than the specified  $t_{RCD}$  limit, then row access time is  $t_{RCD} + t_{CAC}$ .
- 9) These parameters are referenced to leading edge of  $\overline{\text{CAS}}$  (Early-Write) or  $\overline{\text{WRITE}}$  (Delayed-Write or Read-Modify-Write) whichever occurs last.
- 10)  $t_{WCS}$ ,  $t_{CWD}$  and  $t_{RWD}$  are not restrictive operating parameters. They are included under AC Characteristics as electrical characteristics only. If  $t_{WCS} \leq t_{WCS} (\text{Min})$ , the cycle is an Early-Write cycle and the data out pins will remain open circuit (high impedance) throughout the entire cycle. If  $t_{CWD} \geq t_{CWD} (\text{Min})$  and  $t_{RWD} \geq t_{RWD} (\text{Min})$ , the cycle is a Read-Modify-Write cycle and the data out will contain data read from the selected cell. If neither of the above sets of conditions is satisfied, the condition of the data out (at access time) is indeterminate.

READ CYCLE





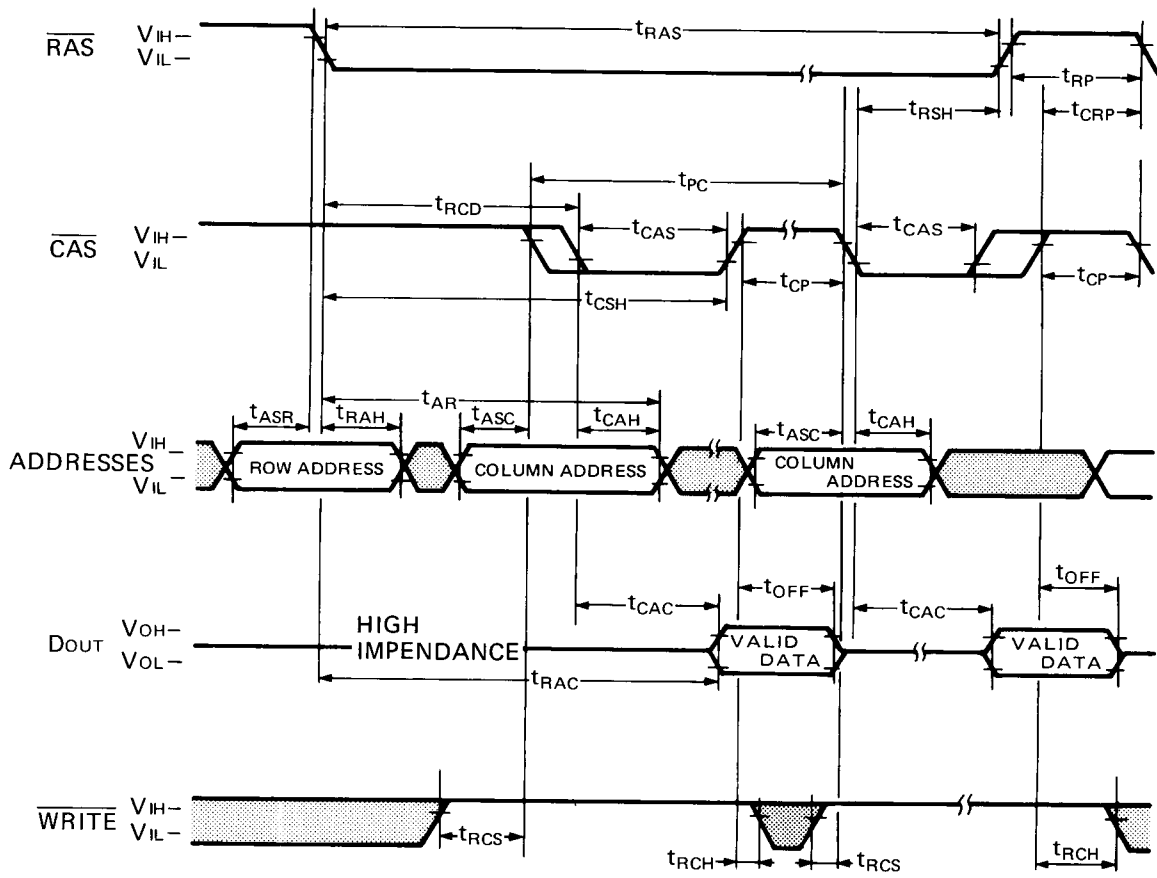
READ-WRITE/READ-MODIFY-WRITE CYCLE



Don't Care

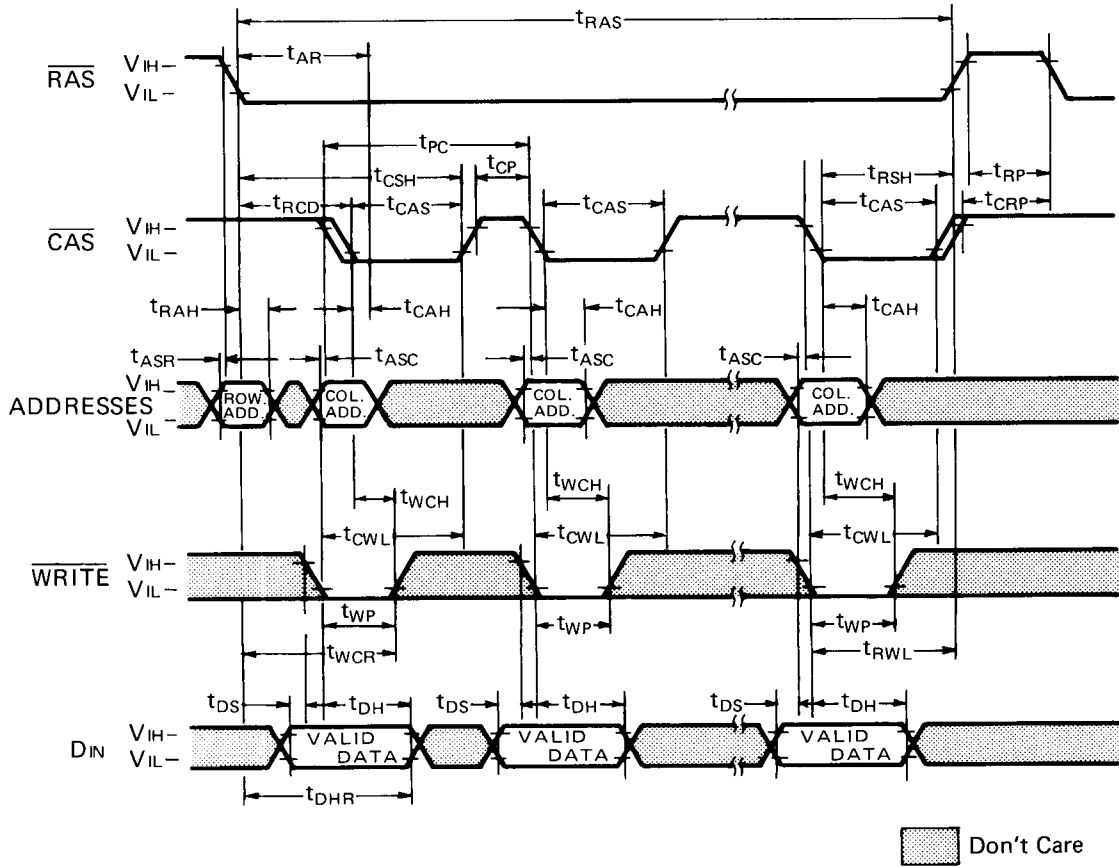


PAGE MODE READ CYCLE



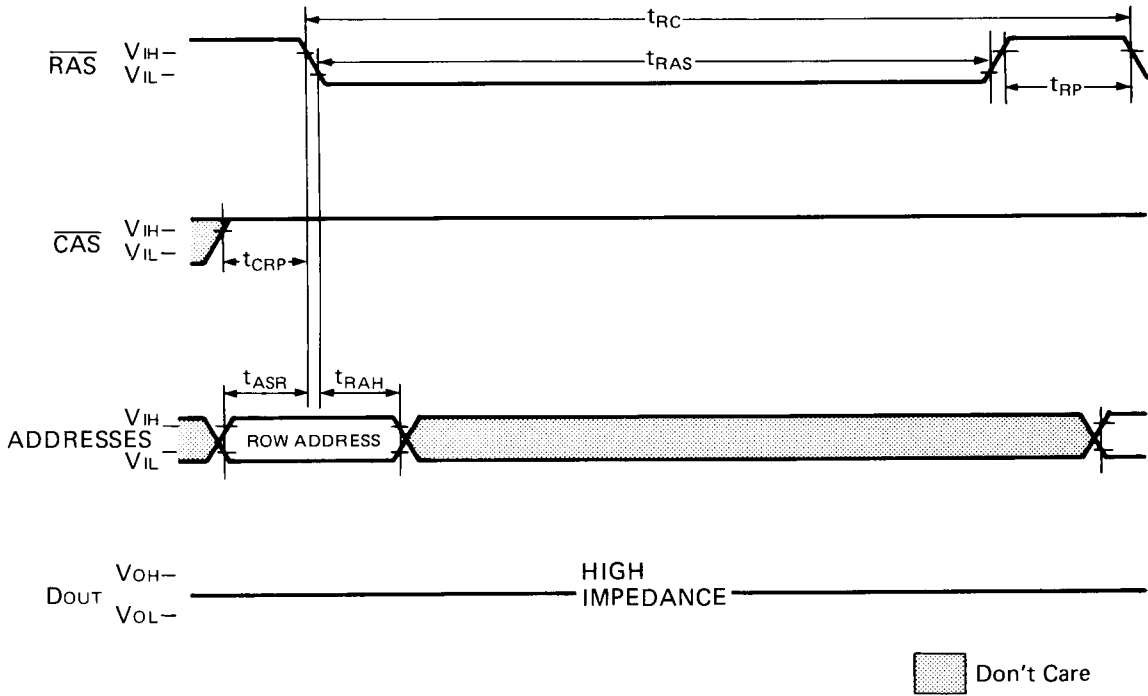
 Don't Care

### PAGE MODE WRITE CYCLE

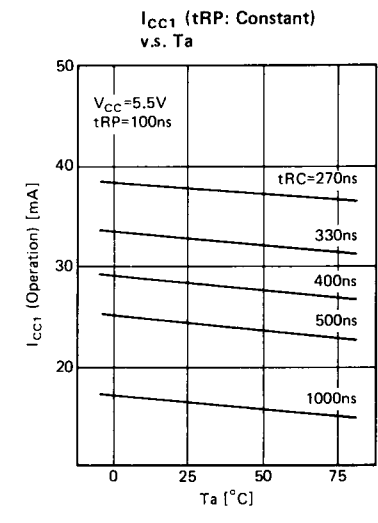
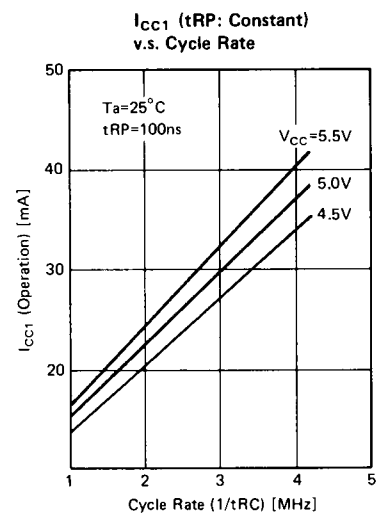
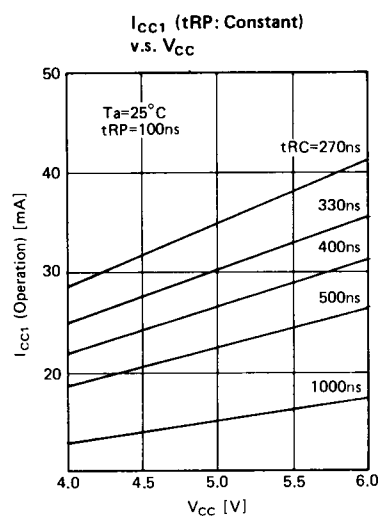
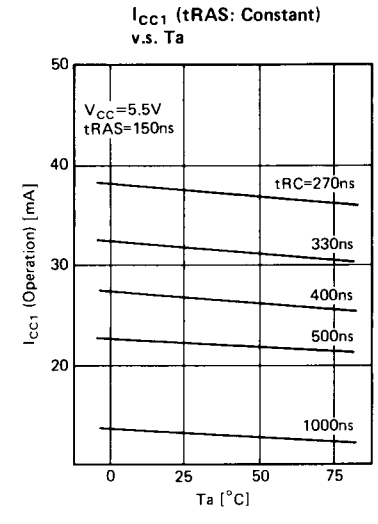
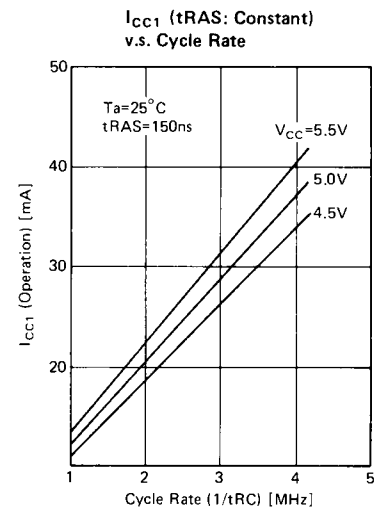
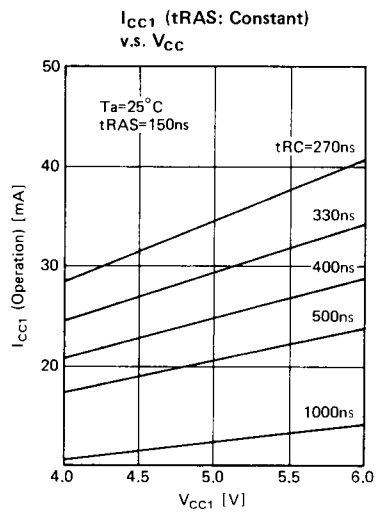
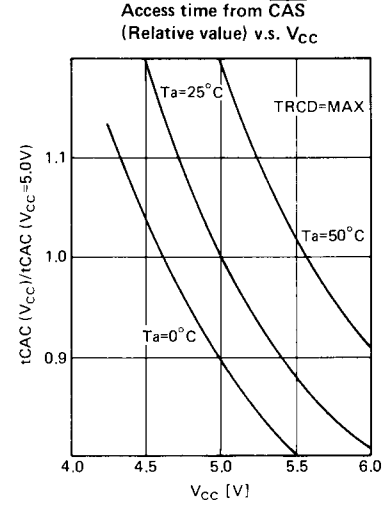
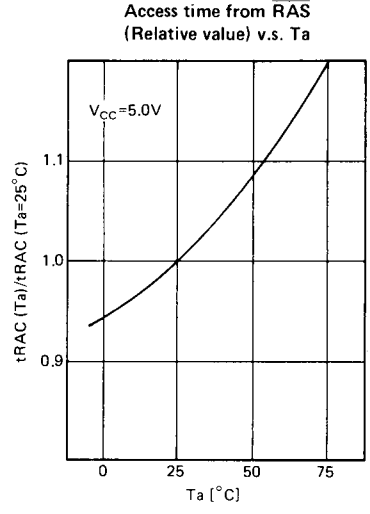
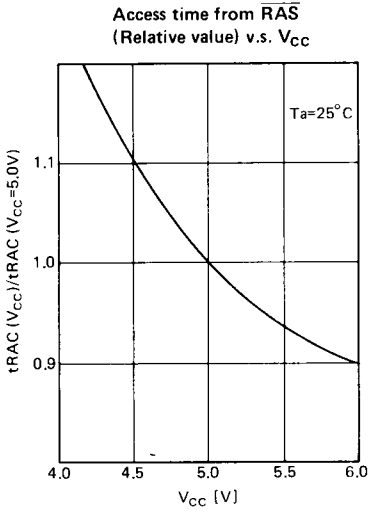


### RAS ONLY REFRESH CYCLE

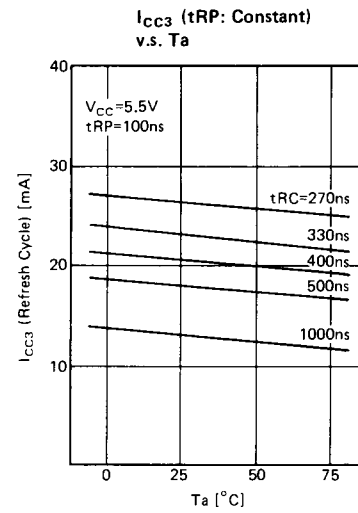
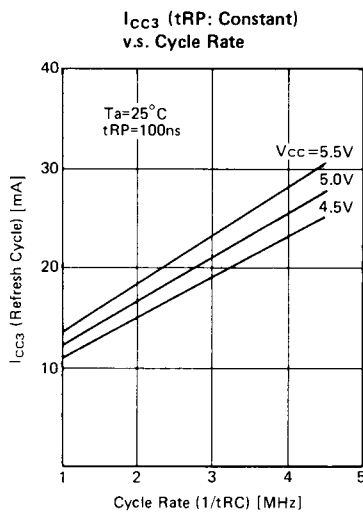
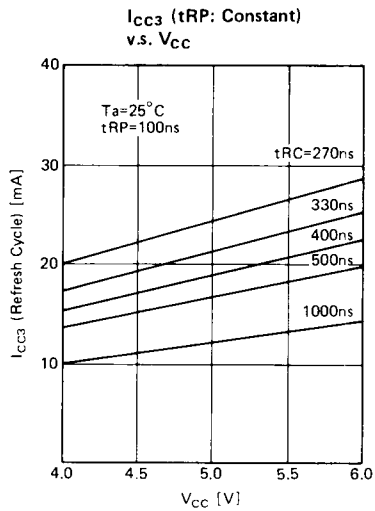
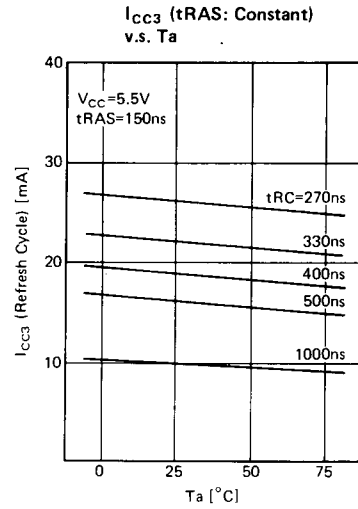
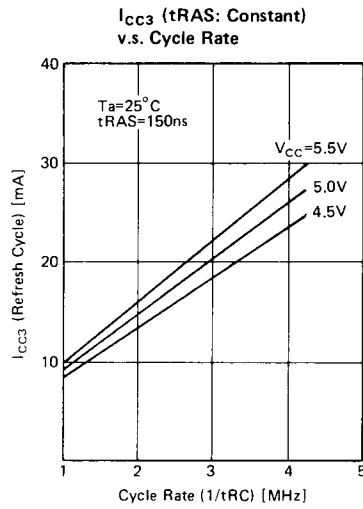
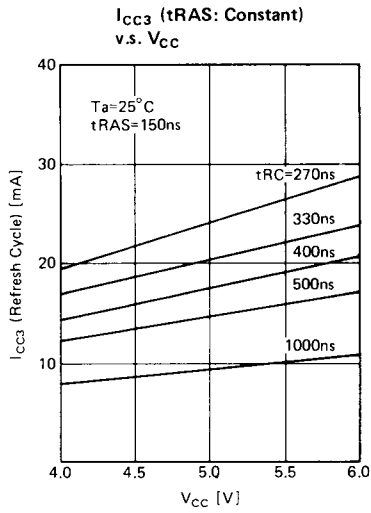
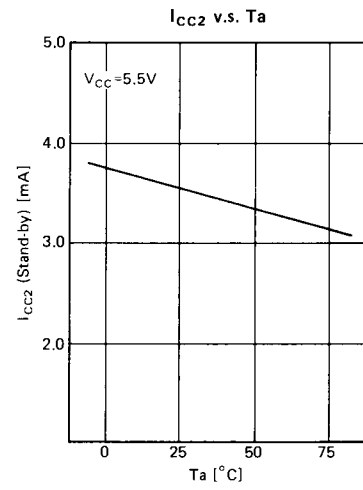
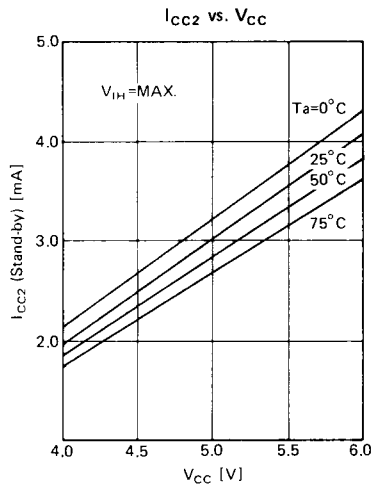
Note:  $\overline{WRITE}$  = Don't Care



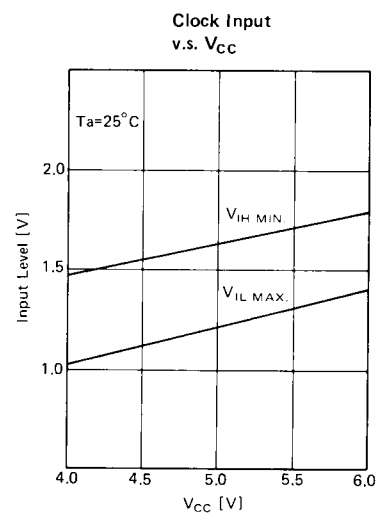
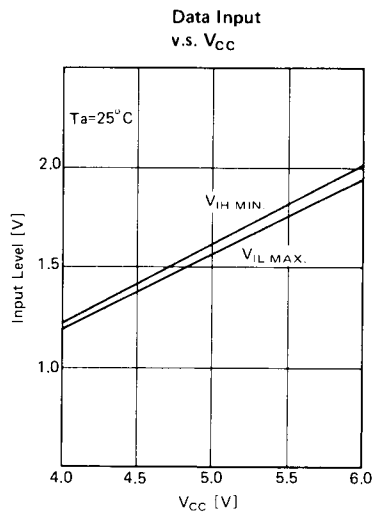
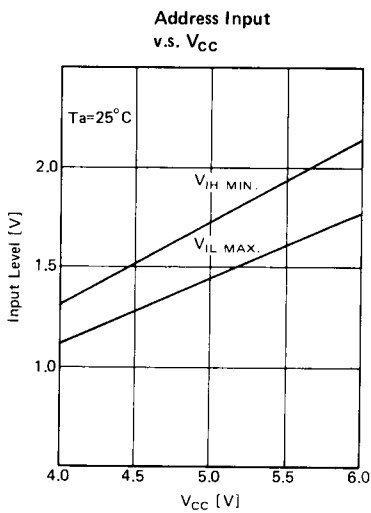
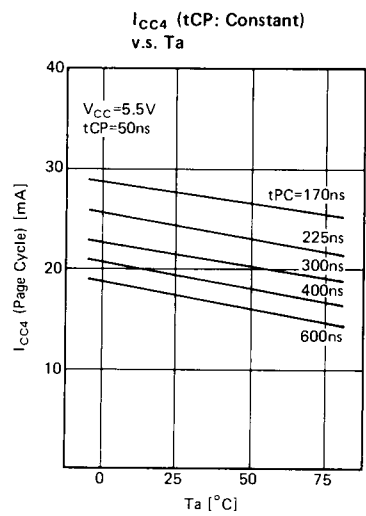
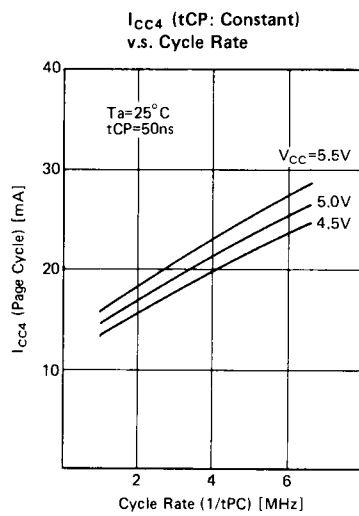
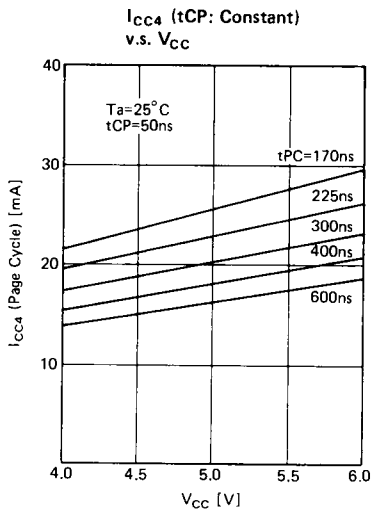
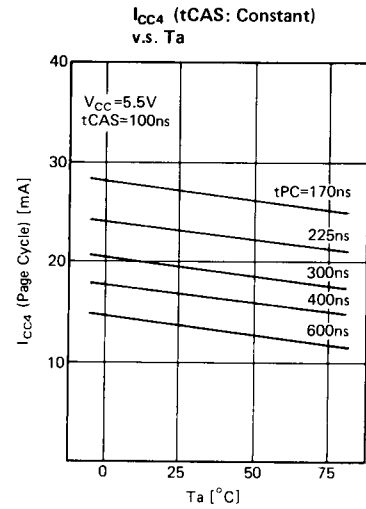
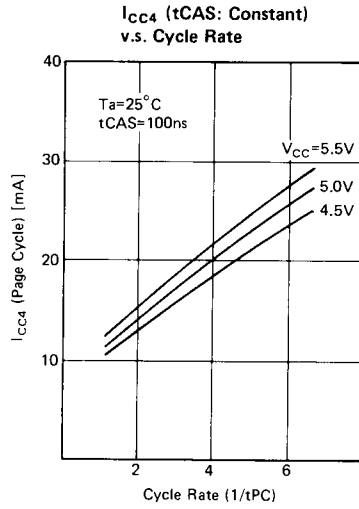
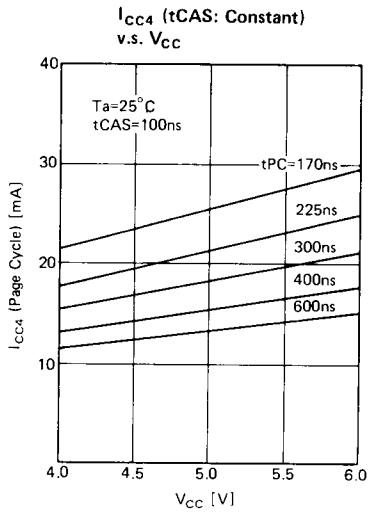
Typical Characteristics Curves



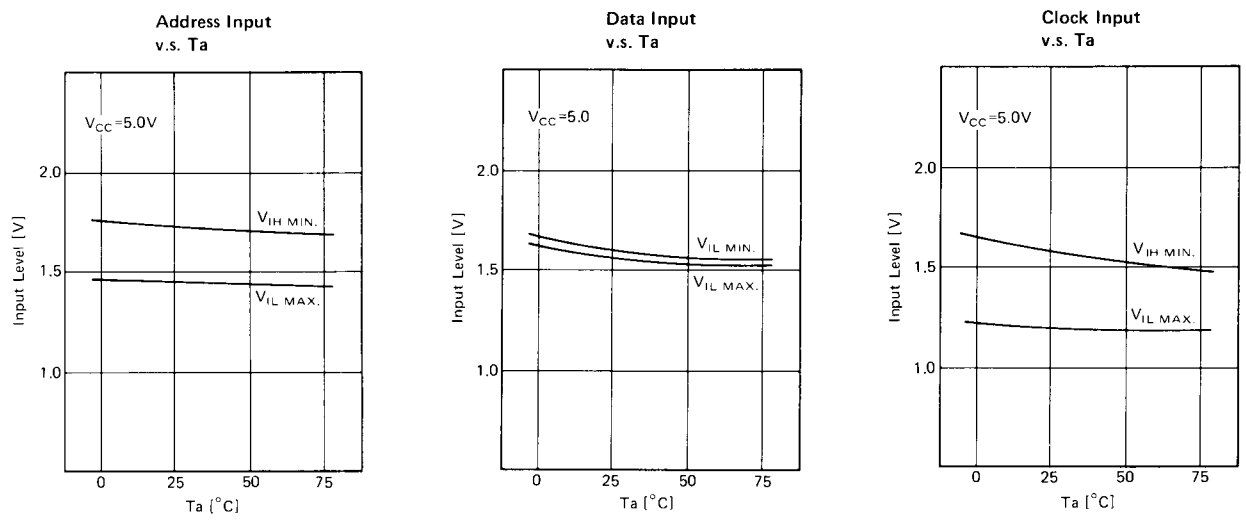
Typical Characteristics Curves (Continued)



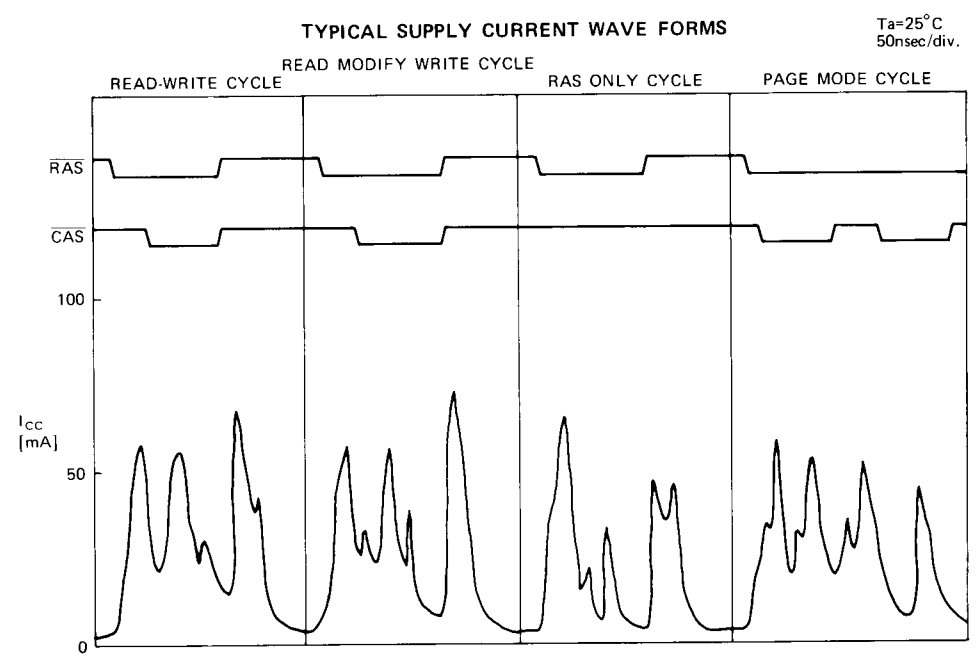
Typical Characteristics Curves (Continued)



DC Characteristics Curves (continued)



Typical Supply Current Wave Forms



## Functional Description

### Address Input

The 16 address bits required to decode 1 of the 65,536 cell locations within the RAM module are multiplexed onto the 8 address inputs and latched into the on-chip address latches by externally applying two negative going TTL level clocks. The first clock, Row Address Strobe ( $\overline{RAS}$ ), latches the 8 row addresses bits into the chip. The second clock, the Column Address Strobe ( $\overline{CAS}$ ), subsequently latches the 8 column address bits into the chip. ( $A_0 \sim A_7$  are row and column address input.) Each of these signals,  $\overline{RAS}$  and  $\overline{CAS}$ , triggers a sequence of events which are controlled by different delayed internal clocks. The two clock chains are linked together logically in such a way that the address multiplexing operation is done outside of the critical path timing sequence for read data access. The later events in the  $\overline{CAS}$  clock sequence are inhibited until the occurrence of a delayed signal derived from the  $\overline{RAS}$  clock chain. This "gated CAS" feature allows the  $\overline{CAS}$  clock to be externally activated as soon as the Row Address Hold Time ( $t_{RAH}$ ) has been satisfied and the address inputs have been changed from row address to column address information.

Note that  $\overline{CAS}$  can be activated at any time after  $t_{RAH}$  and it will have no effect on the worst case data access time ( $t_{RAC}$ ) up to the point in time when the delayed row clock no longer inhibits the remaining sequence of column clocks. Two timing specifications result from the internal gating of  $\overline{CAS}$ ; they are  $t_{RCD}$  (min) and  $t_{RCD}$  (max). No data storage or reading errors will result if  $\overline{CAS}$  is applied to the RAM module at a point in time beyond the  $t_{RCD}$  (max) limit. However, access time will then be determined exclusively by the access time from  $\overline{CAS}$  ( $t_{CAC}$ ) rather than from  $\overline{RAS}$  ( $t_{RAC}$ ), and access time from  $\overline{RAS}$  will be increased by the amount that  $t_{RCD}$  exceeds the  $t_{RCD}$  (max) limit.

### Data Input/Output

Data is retrieved from memory in a read cycle by maintaining  $\overline{WRITE}$  in the inactive or high state throughout the portion of the memory cycle in which  $\overline{CAS}$  is active (low). Data read from the selected cell will be available at the output within the specified access time.

Data to be written into a selected cell is latched into an on chip register by a combination of  $\overline{WRITE}$  and  $\overline{CAS}$  while  $\overline{RAS}$  is active. The later of the signals ( $\overline{WRITE}$  or  $\overline{CAS}$ ) to make its negative transition is the strobe for the Data in register. This permits several options in the write cycle timing. In a write cycle, if the  $\overline{WRITE}$  input is brought low (active) prior to  $\overline{CAS}$ , the  $D_{IN}$  is strobed by  $\overline{CAS}$  and the set up and hold times are referenced to  $\overline{CAS}$ .

If the input data is not available at  $\overline{CAS}$  time or if it is desired that the cycle be a Read-Modify-Write cycle, the  $\overline{WRITE}$  signal will be delayed until after  $\overline{CAS}$  has made its

negative transition. In this delayed write cycle, the data input set up and hold times are referenced to the negative edge of  $\overline{WRITE}$  rather than  $\overline{CAS}$ . (To illustrate this feature,  $D_{IN}$  is referenced to  $\overline{WRITE}$  in the timing diagrams depicting the "Read-Modify-Write" cycle while the "WRITE" and "Page-Mode-Write" cycle diagrams show  $D_{IN}$  referenced to  $\overline{CAS}$ .)

### Data Output

The normal condition of the data output ( $D_{OUT}$ ) of the RAM module is a high impedance state. That is to say, any time  $\overline{CAS}$  is at a high level, the  $D_{OUT}$  pin will be floating. The only time the outputs will turn on and contain either a logic 0 or logic 1 is at access time during a read cycle.  $D_{OUT}$  will remain valid from access time until  $\overline{CAS}$  is taken back to the inactive (high) conditions.

If the memory cycle in progress is "Read" or "Read-Modify-Write" cycle, then the data output will go from the high impedance state to the active condition, and at access time will contain the data read from the selected cell. This output data is the same polarity (not inverted) as the input data. Once having gone active the output will remain valid until  $\overline{CAS}$  is taken to the precharge state, whether or not  $\overline{RAS}$  goes into precharge.

If the cycle in progress is a "Write" cycle (Write active before  $\overline{CAS}$  goes active), then the output pins will maintain the high impedance throughout the entire cycle.

Note that with this type of output configuration, the user is given full control of the  $D_{OUT}$  pin simply by controlling the placement of  $\overline{WRITE}$  command during write operations, and the pulse width of  $\overline{CAS}$  during read operations. Note also that even though data is not latched at the output, data can remain valid from access time until the beginning of a subsequent cycle without paying any penalty in overall memory cycle time (stretching cycle). This type of output operation results in some very significant system implications.

### Common I/O

If all write operations are handled in the "Write" cycle mode ( $\overline{\text{WRITE}}$  active before  $\overline{\text{CAS}}$  goes active), then  $D_{\text{IN}}$  can be connected directly to  $D_{\text{OUT}}$  respectively for common I/O data bus.

### RAS and CAS Chip Selection

Only those devices which receive both  $\overline{\text{RAS}}$  and  $\overline{\text{CAS}}$  signals will execute a read or write cycle. Since  $D_{\text{OUT}}$  is not latched,  $\overline{\text{CAS}}$  is not required to turn off the outputs of unselected memory device in a matrix. This means that both  $\overline{\text{CAS}}$  and/or  $\overline{\text{RAS}}$  can be decoded for chip selection. If a common  $\overline{\text{CAS}}$  scheme is used where  $\overline{\text{RAS}}$  is decoded for module selection, then total memory power can be conserved. If both  $\overline{\text{RAS}}$  and  $\overline{\text{CAS}}$  are decoded, then a two dimensional (X,Y) chip select array can be realized.

### Page Mode

The "Page-Mode" feature of the RAM module allows for successive memory operations at multiple column locations of the same row address with increased speed without an increase in power. This is done by strobing row address into the chip and maintaining the  $\overline{\text{RAS}}$  signal at a logic 0 throughout all successive memory cycle in which the row address is common. This "Page-Mode" of operation will not dissipate the power associated with the negative going edge of  $\overline{\text{RAS}}$ . Also, the time required for strobing in a new row address is eliminated, thereby decreasing the access and cycle times.

The successive memory operations in "Page-Mode" may be any sequence of read, write, or read-modify-write operations.

The page boundary of a single RAM module is limited to the 256 column locations determined by all combinations of the 8 column address bits. However, in system applications which utilize more than 65,536 data words (more than one 64K memory block), the page boundary can be extended by using  $\overline{\text{CAS}}$  rather than  $\overline{\text{RAS}}$  as the chip select signal.  $\overline{\text{RAS}}$  is applied to all devices to latch the row address into each device and then  $\overline{\text{CAS}}$  is decoded and serves as a page cycle select signal. Only those devices which receive both  $\overline{\text{RAS}}$  and  $\overline{\text{CAS}}$  signals will execute a read or write cycle.

### Refresh

Refresh of the dynamic cell matrix is accomplished by performing a memory cycle at each of the 128 row addresses within each 2 ms time interval. Although any normal memory cycle will perform the refresh operation, this function is most easily accomplished with " $\overline{\text{RAS}}$ -Only" cycles.  $\overline{\text{RAS}}$ -Only refresh results in a substantial reduction in operating power. This reduction in power is reflected in the  $I_{\text{CC3}}$  specification.

#### MATSUSHITA ELECTRONICS CORPORATION SEMICONDUCTOR DIVISION Nagaokakyo, Kyoto, Japan

- Export Division: MATSUSHITA ELECTRIC TRADING CO., LTD.
- Head Office: P.O. Box 288, Osaka Japan
- U.S. Sales Office: PANASONIC INDUSTRIAL COMPANY, Division of Matsushita Electric Corporation of America Electronics Components Division
- Head Office: One Panasonic Way, Secaucus, N.J. 07094  
Tel: (201) 348-5268 (S.C. General), 348-5273 (OPT)  
348-5270 (IC/LSI), 348-5274 (TR)
- Eastern Regional Office: One Panasonic Way, Secaucus, N.J. 07094  
Tel: (201) 348-5233
- Central Regional Office: 425 East Argonquin Road, Arlington Heights, Ill. 6005  
Tel: (312) 981-4837
- Western Regional Office: 6550 Katella Ave, Cypress, Ca. 90630  
Tel: (714) 895-7200
- Southern Regional Office: Two MECA Way, Norcross, Ga. 30093  
Tel: (404) 923-9700

Distributor: